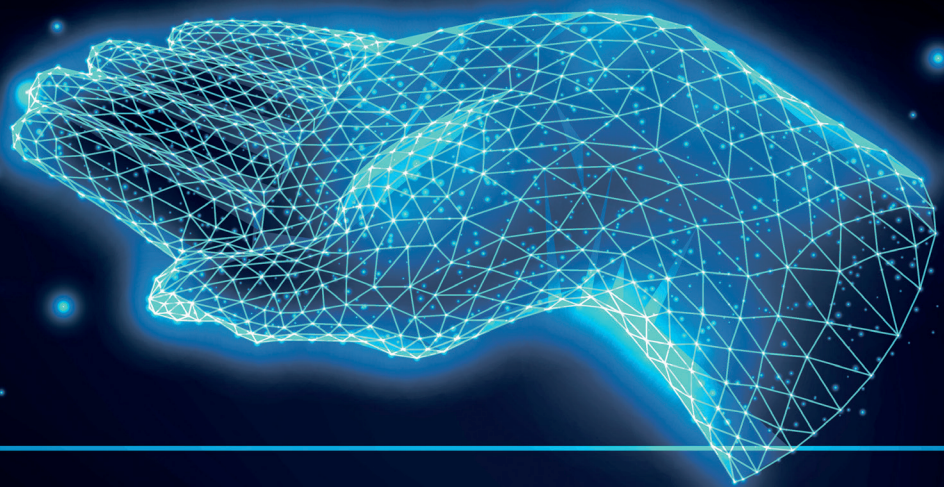




# ccare 2.0

Critical Care Comprehensive Education Program

**A certificate program focused on  
hemodynamic monitoring and fluid  
management in Intensive Care Units**





## About CHEST

The American College of Chest Physicians (CHEST) is the global leader in advancing best patient outcomes through innovative chest medicine education, clinical research, and team-based care.

Its mission is to champion the prevention, diagnosis, and treatment of chest diseases through education, communication, and research.

It serves as an essential connection to clinical knowledge and resources for its 19,000+ members from around the world who provide patient care in pulmonary, critical care, and sleep medicine.

For information about CHEST and the journal CHEST®.  
Visit <https://www.chestnet.org/>





# Welcome Note

Dear Doctor,

As a part of the global healthcare ecosystem, Takeda's R&D is in constant pursuit of scientific breakthroughs to deliver transformative therapies to patients worldwide. Through partnerships, collaboration, and research, we aim at fostering an ecosystem of innovation to translate cutting-edge science into impactful health solutions. To accomplish this, we have been working with some of the most credible institutions worldwide, to present data and other resources supporting your clinical practice.

Keeping in mind the constant need for an upgrade in the practice of medicine, once again we are here to support your learning through a unique initiative and are pleased to announce the commencement of Critical Care Comprehensive Education Program 2.0 named 'CARE 2.0'.

This virtual, self-paced learning program in collaboration with the most renowned body the 'CHEST - American College of Chest Physicians'. This program focuses on hemodynamic monitoring and fluid management in Intensive Care Units (ICUs).

We take great pleasure in inviting you to be a part of this initiative. Through this program, we aim at sharing with you the most recent and relevant learning about fluid management of patients admitted in ICUs through modules, assessments, case studies, virtual symposia for interaction with experts and more. Upon successful program completion, it will also be an honour for us to present to you a certificate of completion from CHEST.

Takeda is elated to be a part of your journey of growth, hoping this initiative serves as a medium of value addition.

Warm Regards,



# About the Program

Critical Care Comprehensive Education Program - CARE 2.0 is an all-encompassing scientific initiative focusing on hemodynamic monitoring and fluid management in Intensive Care Units for critical care experts and intensivists.

The program pedagogy includes blended monthly activities, spanning over a period of few months, covering modules, assessments, case studies and virtual symposia for interaction with subject matter experts.

The program would culminate with certificate of completion from CHEST being awarded to participants who complete the course successfully.

## Program Topics

01

### Management of Patients with Burn

Fluid resuscitation in patient with burns

02

### Patients with Sepsis and Septic shock

Individualizing fluid resuscitation

03

### Patient with Cirrhosis in ICU

Comprehensive hemodynamic evaluation of patients with advanced liver disease

## Program Highlights

1. Partnering with prestigious associations: CHEST
2. Case based discussions and real-time solutions from pioneers in critical care management.
3. Analysis of skill enhancement through assessments
4. Self-paced learning with content available for long-term viewership
5. Certificate of completion from CHEST

## Program Flow

- 01** **Opening Conclave** - 2-hours metaphysical event with CHEST expert connecting virtually and Indian expert at location and it will be relayed Pan-India
- 02** **Precision Learning Module** - Pre-recorded videos from CHEST each being 30-40 mins
- 03** **Grand Round Session** - Webinar of 60-90 mins each with Indian experts
- 04** **Clinical Assessment** - Each assessment to have case study and 2 MCQs and assessment to be delivered with the help of KOL by
- 05** **Certificate of Completion** - Certificate from CHEST upon completion of the entire program



## Steps to access

01

Visit <https://www.mysensei.tv/> and click on CARE 2.0 card under all course button

02

Fill in the required details (First Name, Last Name, Country, Email id, Mobile number, etc) and tick on below box for consent. And then click on submit to complete the registration process

03

Go to the login page and put email id as username and password and click on login and access the course





An educational initiative by



**Copyright:** All rights reserved. No part of this print collateral may be reproduced, stored in retrieval system, tapes, discs, microfilms, etc., or transmitted in any form or by any means electronic, mechanical, photocopies, recording or otherwise, without the written permission of Insignia Learning Pvt. Ltd., Mumbai.

**Disclaimer:** The information contained herein is available to the public for information purposes only; it should not be used for diagnosing or treating a health problem or disease. It is not intended to substitute for consultation with a healthcare provider. Please consult your healthcare provider for further advice, diagnosis or treatment. The information provided is aimed at increasing awareness on fluid management in critical care and sepsis. and it is not meant for promotion of any specific product. Takeda makes no representation or warranty concerning the information / content provided. This material contains copyright protected information, content; the use of which is limited by law and this material cannot be reproduced, replicated, used or modified by any person for their own use or further distribution. "TAKEDA and the TAKEDA logo are trademarks or registered trademarks of Takeda Pharmaceutical Company Limited"